

## 935EX Ionising Blower



### Product Code: A935EX

The 935EX Ionising Blower provides effective long range ionisation in hazardous locations. It is popular for large 3d plastic mouldings in paint booth applications, where solvents from the paints mean that the installation area is typically zone 1 or 2.

The system comprises the ionising head or heads and a remote blower, positioned in a safe area.

The ionisation for the head is provided by 2 model 915Ex ionising bars. These are powered by Model 904 Power supplies. The blower is, typically, a three phase unit that is sized according to the application.

Interconnecting ducting can be supplied by Meech if required.

### Features

### Benefits

Ionisation provided by Meech 915EX bars	Powerful ionisation with very fast decay times
High volume air flow	Provides highly effective long range ionisation
Removable polypropylene grille	Easy access for regular maintenance of ionisation head
For use in hazardous locations	ATEX certified ionising bars
Remote Blower	Ensures ionising bars operate in clean, solvent-free air

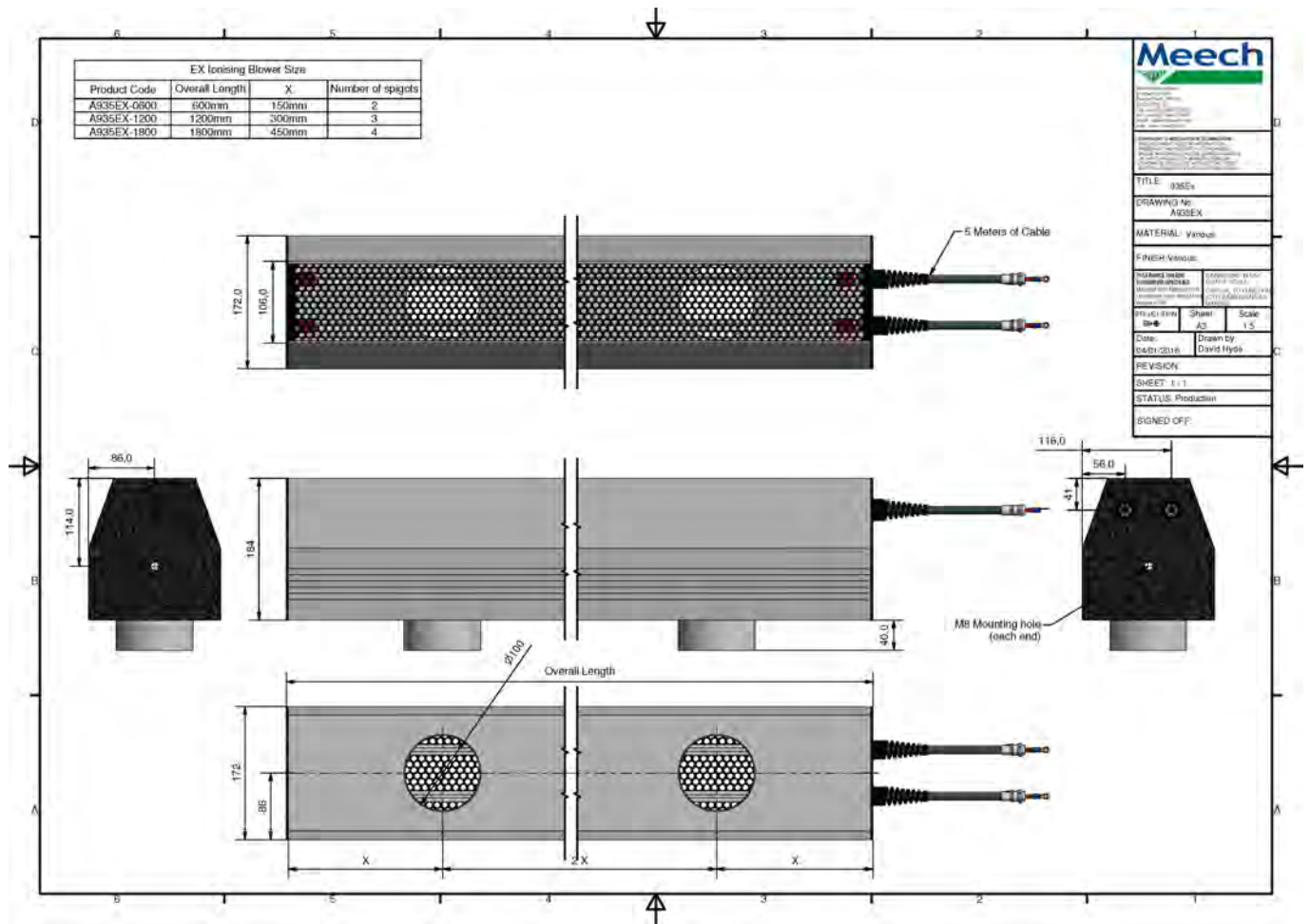
### Technical Characteristics

Cross section (mm)	172 x 233
Max Length (mm)	2400
Weight per metre	10kg
Ionising Bar Operating Voltage	7kV from 904 Power supply ( Requires 110/220V 50/60Hz)
High Voltage Cable	5 metres shielded in flexible conduit
Construction	Aluminium / Steel
Mounting	Steel fixing brackets supplied with each unit
EX Zone Characteristics	II 2 GD EEx m 1180 Gas Group iiA, Temp Class T6 (T85°C)
Optimum Working Distance	200 - 1500mm
915EX Ionising Bar Certificate	Baseefa: 04ATEX0347X
Ionising Head Duct Connections	100mm dia.

Product shown in this document may be covered by one or more patents, patents applied for and/or registered designs and/or trade marks. For further information please refer to our Head Office or visit [www.meech.com](http://www.meech.com).

# Product Data Sheet

Published Date: 28.04.17



<b>Meech</b>		
<small>                 Meech International Ltd                  Unit 10, The Enterprise Centre                  1000 Oldham Road, Oldham, Greater Manchester, M4 3JL, UK                  Tel: +44 (0)161 275 1111 Fax: +44 (0)161 275 1112                  Email: sales@meech.com             </small>		
TITLE: 035EX		
DRAWING No: A935EX		
MATERIAL: Vynbul		
FINISH: Vynbul		
<small>                 PRODUCT CODE: A935EX-0900                  PRODUCT CODE: A935EX-1200                  PRODUCT CODE: A935EX-1800             </small>	<small>                 DRAWING CODE: 035EX                  DRAWING CODE: 035EX                  DRAWING CODE: 035EX             </small>	<small>                 SCALE: 1:1                  SCALE: 1:1                  SCALE: 1:1             </small>
<small>                 PROJECT: 035EX                  DATE: 04/01/2016             </small>	<small>                 SHEET: A3                  DRAWN BY: David Hyde             </small>	<small>                 SCALE: 1:1             </small>
REVISION:		
SHEET: 1 of 1		
STATUS: Production		
SIGNED OFF:		

Product shown in this document may be covered by one or more patents, patents applied for and/or registered designs and/or trade marks. For further information please refer to our Head Office or visit [www.meech.com](http://www.meech.com).

Meech International

UK: +44 1993 706 700  
Hungary: +36 1 7977039

US: +1 330 564 2000  
China: +86 400 820 0102

Belgium: +32 (0)80 670 204  
India: +91 20-26159641

email: [sales@meech.com](mailto:sales@meech.com)  
web: [www.meech.com](http://www.meech.com)

