

994CG Remote Setpoint Controller



Product Code: A994CG-RSC-01

The Remote Setpoint Controller (RSC) provides a simple method of generating the 4-20mA control signal to set the output voltage of the 994CG Compact Generator. Connected in line with the power supply to the 994CG, the RSC has a recessed potentiometer that allows manual adjustment of the output voltage from 4-25kV.

Features

Small size
Easy adjustment
Simple surface mounting

Benefits

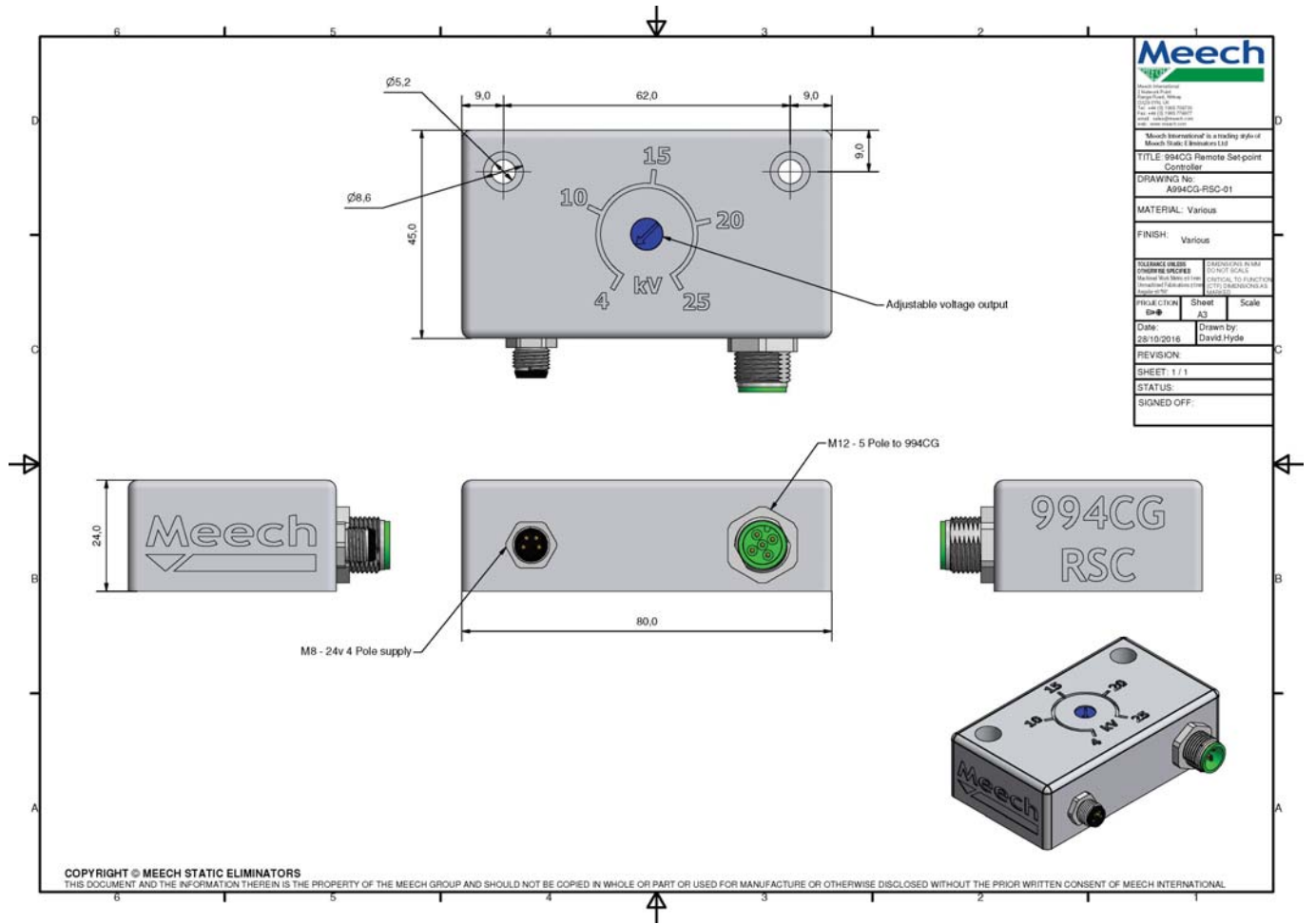
Can be easily mounted on the end of arm tool on a robot
Recessed potentiometer allows manual adjustment of the output voltage from 4-25kV
Two mounting holes offer easy mounting

Technical Characteristics

Dimensions (H x W x D) (mm)	24x80x45
Weight (kg)	0.15
Construction	Nylon
Mounting	2 x 5.2Ø mounting holes
Power Supply	24V switchmode
Input connection (Electrical)	M8 Murr
Output current	4-20mA
Output connection	M12 Murr
Controls	Potentiometer

Product Data Sheet

Published Date: 11.09.18



Product shown in this document may be covered by one or more patents, patents applied for and/or registered designs and/or trade marks. For further information please refer to our Head Office or visit www.meech.com.

Meech International UK: +44 1993 706 700 US: +1 330 564 2000 Belgium: +32 8067 0204 Singapore: +65 65918859 email: sales@meech.com
Hungary: +36 27 535 075 China: +86 400 820 0102 India: +91 (0)7030938211 web: www.meech.com